

Fotoba Cut Marks Specifications

FOTOBA INTERNATIONAL S.R.L.
Via G. Marconi 101
13854
Quaregna Cerreto (BI) Italy
Tlf. +39 015 925344 - Fx +39 015 925346
<http://www.fotoba.com>
<mailto:info@fotoba.com>

Index

Main settings.....page	3
General Caldera Settings.....page	9
General Onyx Settings..... page	16
General Colorgate Settings.....page	17
General AVA Settings.....page	19
General Ergosoft settings.....page	23
General Fiery settings.....page	32

Main Setting page 5

Reference dimensions:

- **A** Horizontal cut mark size
2mm black 2mm white 2mm black
- **B** Space between image and
mark 4mm White
- **C** Vertical mark
2mm black
- **D** Space between image and side mark
 $\geq 1\text{mm}$
- **E** Space from media edge to vertical mark
 $> 10\text{mm} < 100\text{mm}$
- **F** Bleed
2mm on each side
- **G** Slicer cutting position
Position where the vertical knives are adjusted
- **H** Double cut
Adjustable in: **MENU - Double cut setting**

Step & repeat from printer page 6

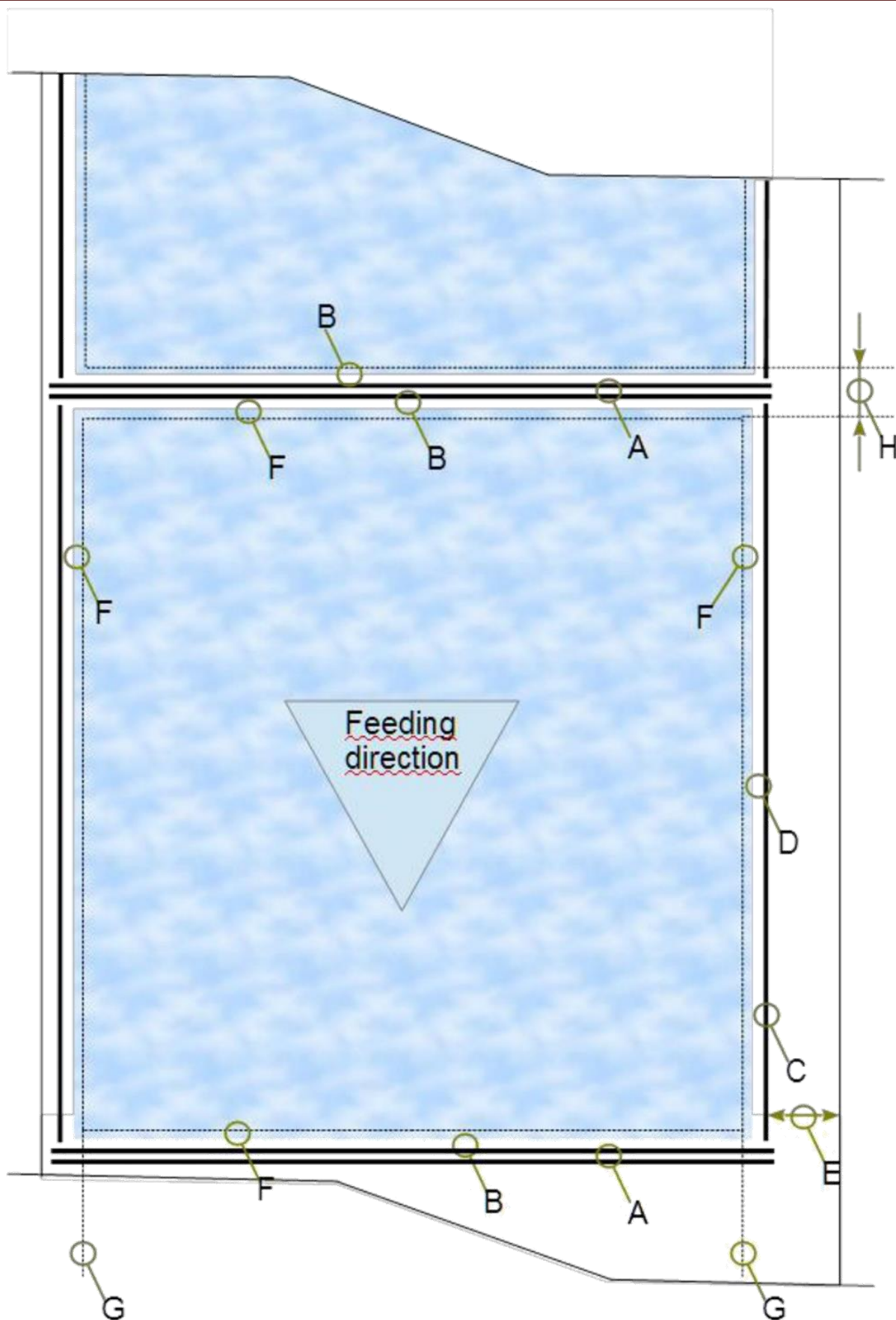
- **J** Space between copies
 $\geq 4\text{mm} \leq 25\text{mm}$

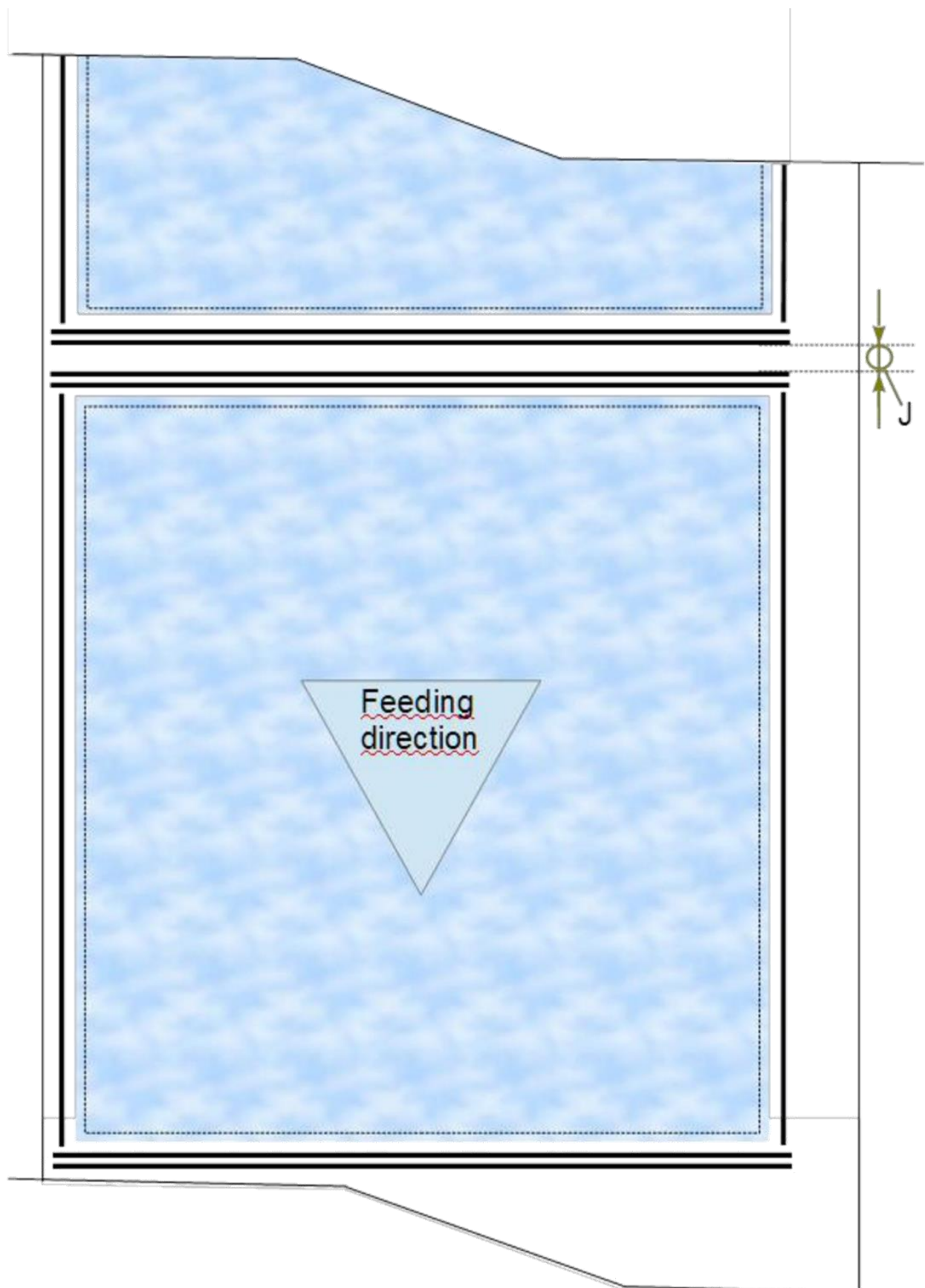
Side by side without line page 7

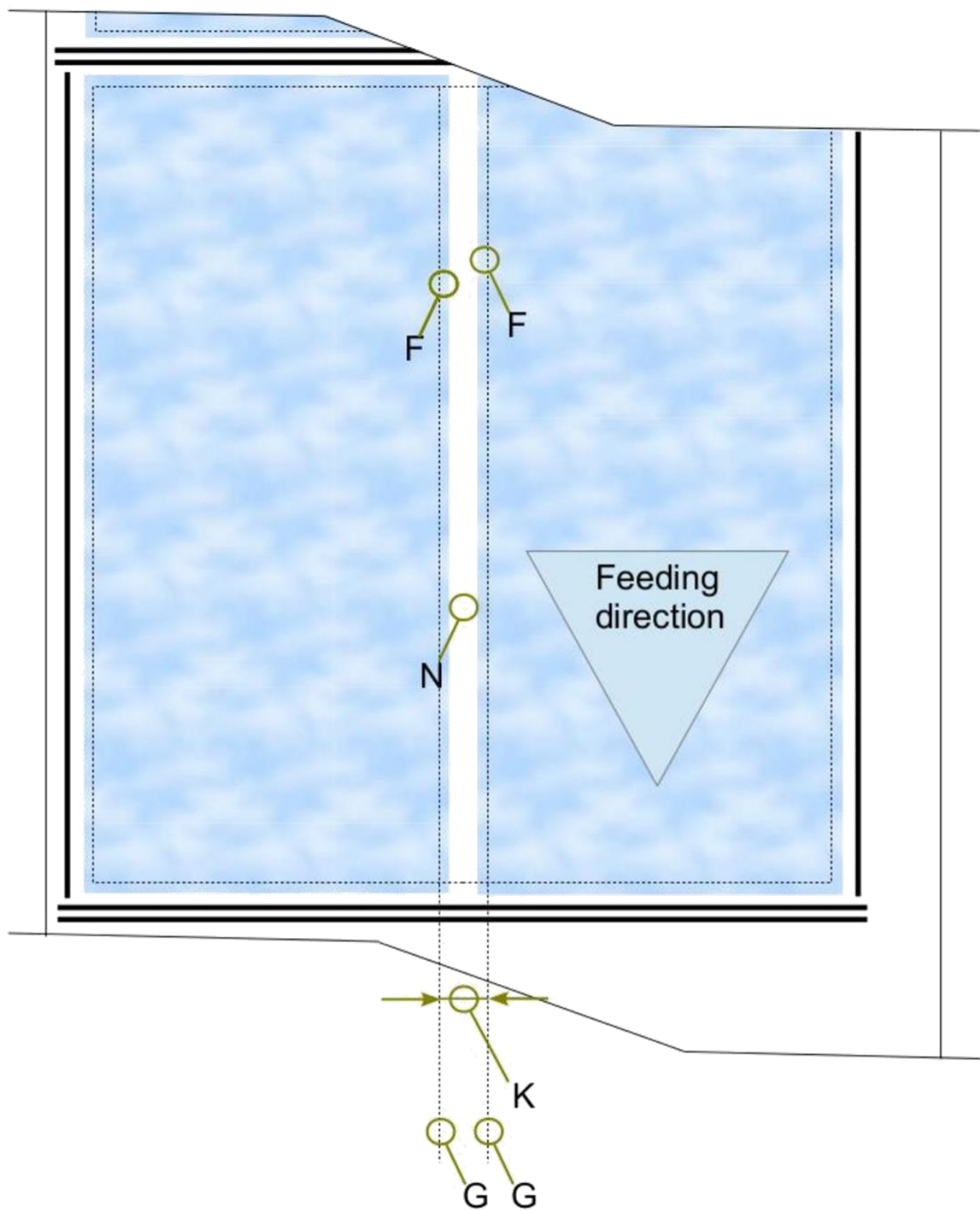
- **N** Space between images
4mm

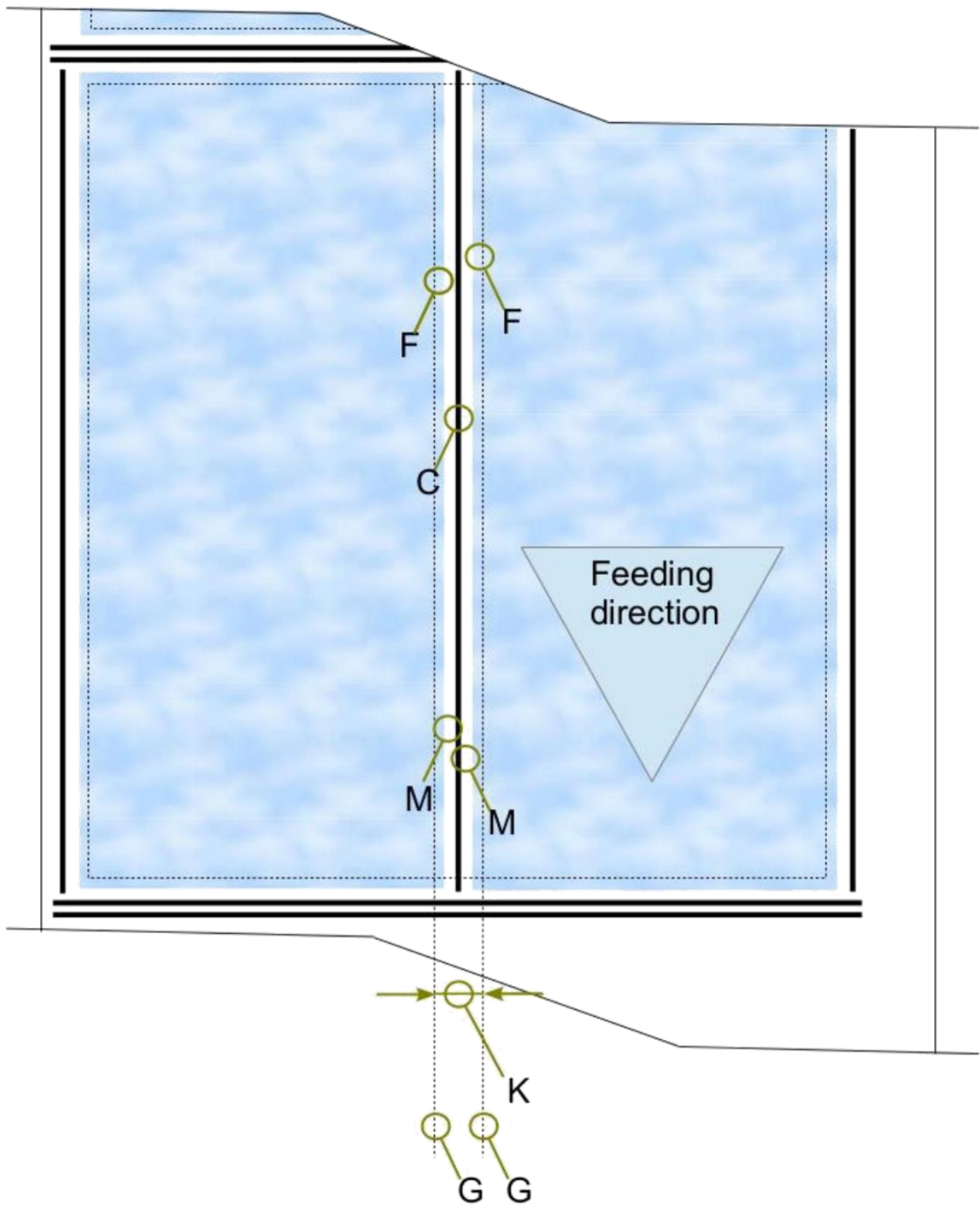
Side by side with line page 8

- **K** Space between cutting
8mm
- **M** Space between line and images
1mm







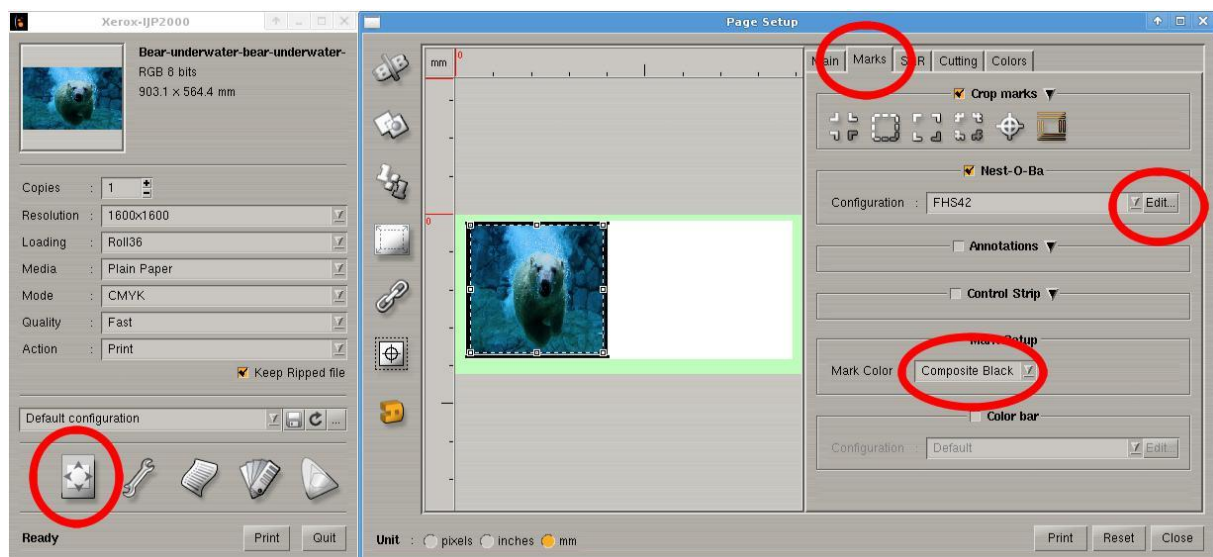


Please note: below information are provided by RIP or external companies and included in this RIPs manual by Fotoba personnel
All the settings and value described below must to be considered as purely indicative.

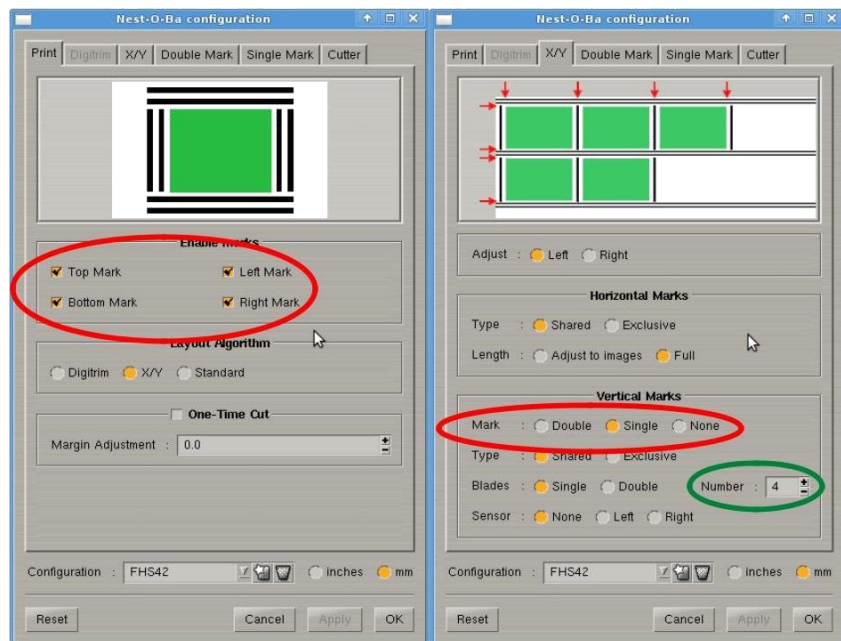
General Caldera settings

Version 8

Using Nest-O-Ba plugin (suggested)

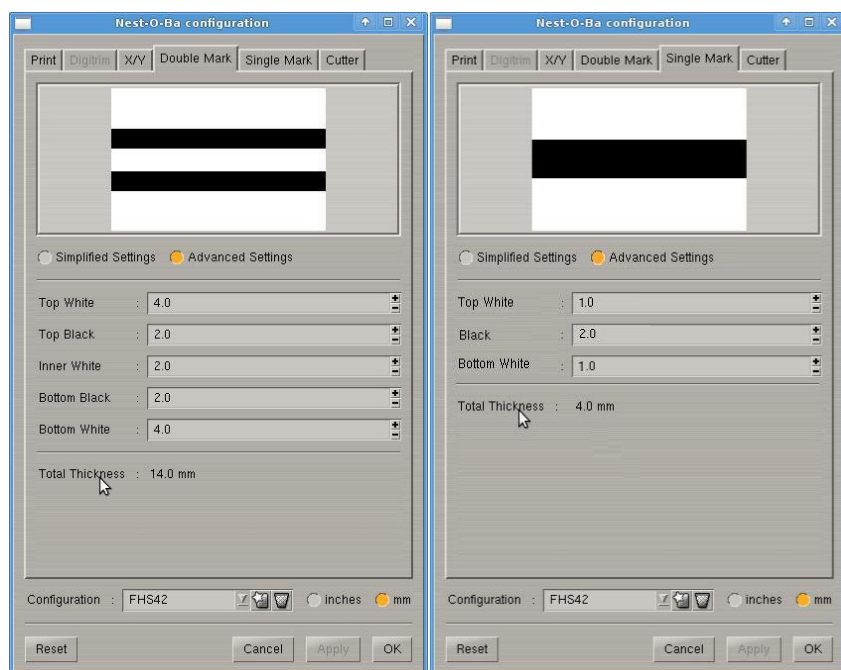


- From the Caldera IJP2000 driver controller, select the **Placement** tab and then the **Crop marks** tab and then **Edit**.
 - Check that Mark Color is set to **Composite Black**
- On the Print tab, select X/Y and check all the following tabs as shown in the picture (Nest-O-Ba plugin has to be installed)
 - Make sure that all four marks are enabled (next page)



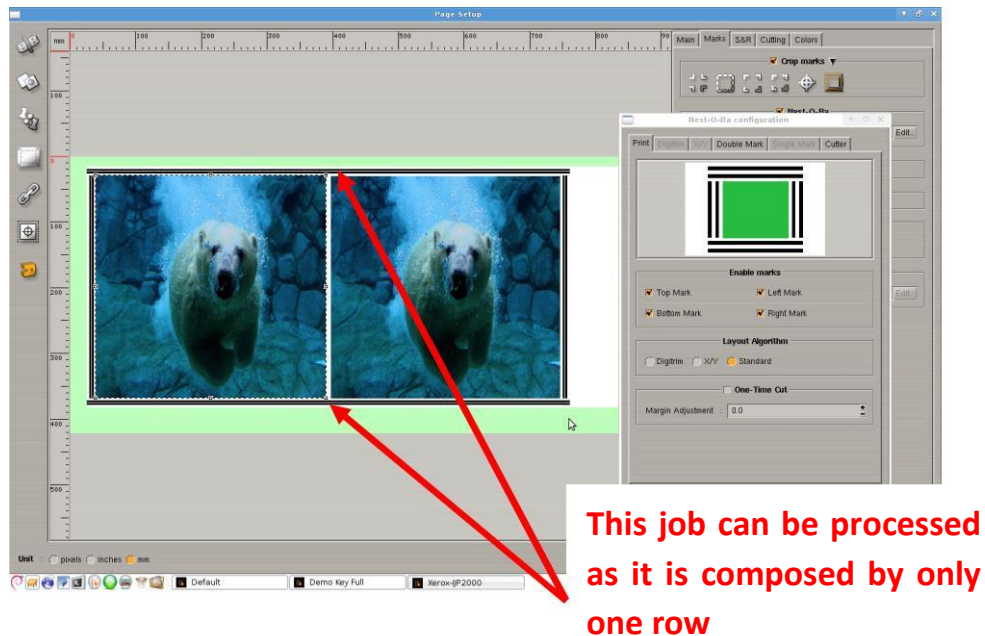
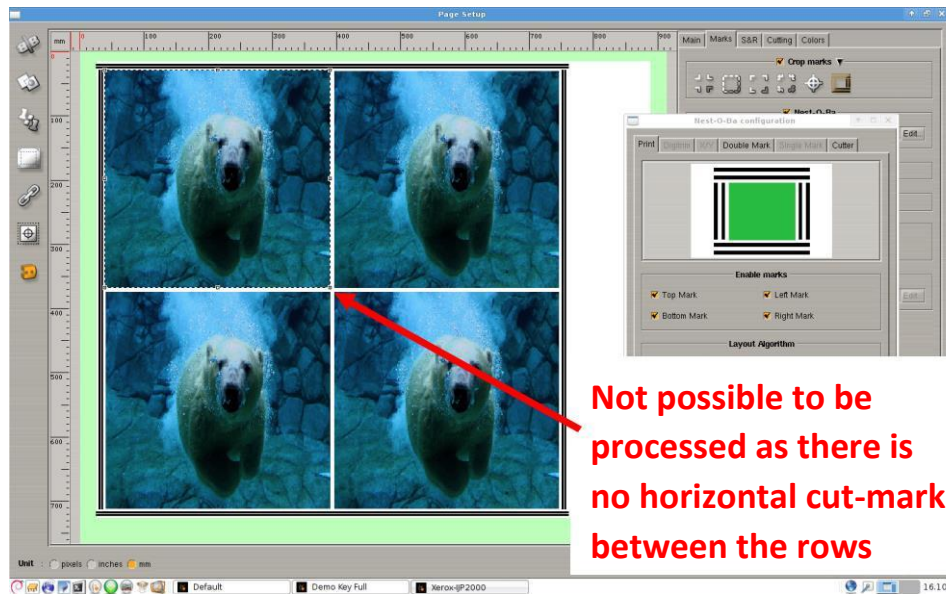
NOTE: the value on **Number** (green circle) is depending on how many vertical knives you have

- Please check and set the Double mark and Single mark as following:



In case Nest-O-Ba plugin is not installed

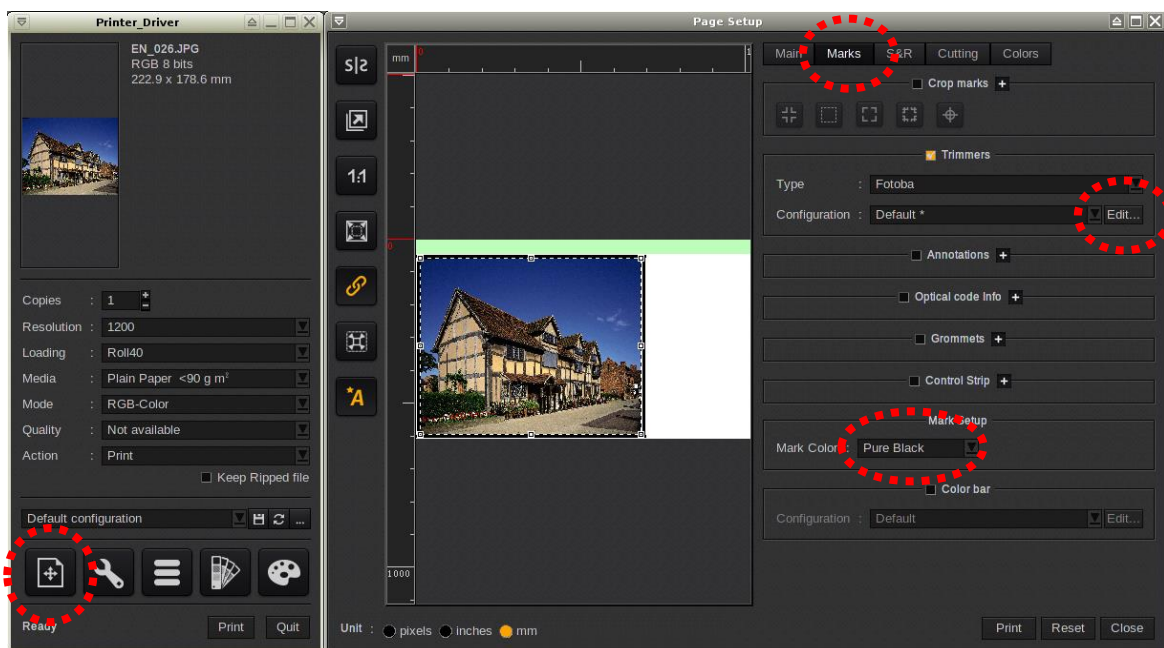
- The Nest-O-Ba plugin enables the possibility to use Y/X layout.
- In case Nest-O-Ba is not installed, the only option that it is possible to use is **Standard**.
- The **Standard** layout will print the cut-marks only around the frame, so it will only be possible to send one row of pictures on each sheet.



Version 11/12

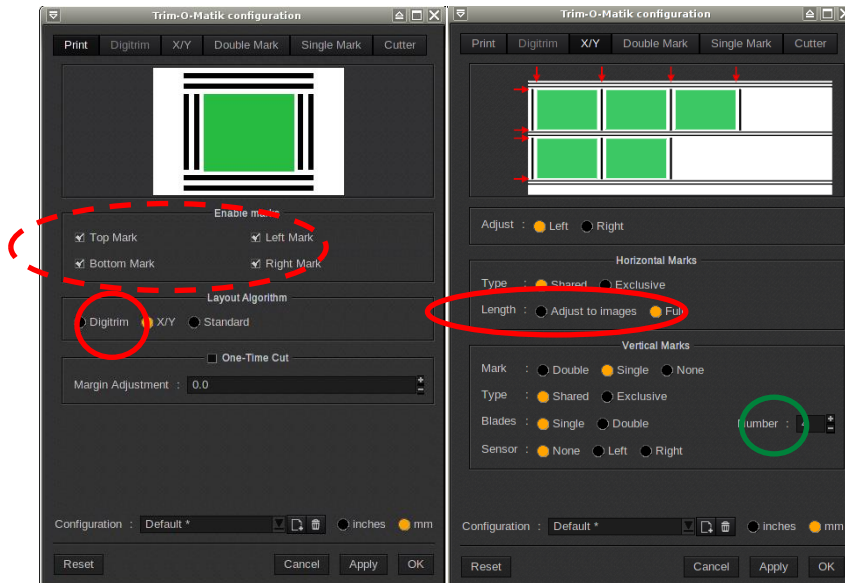
Using Nest-O-Ba plugin (suggested)

From the Caldera IJP2000 driver controller, select the **Placement** tab and then the **Marks** tab. Enable **Trimmer** and then **Edit**. Check that Mark Colour is set to **Composite Black**

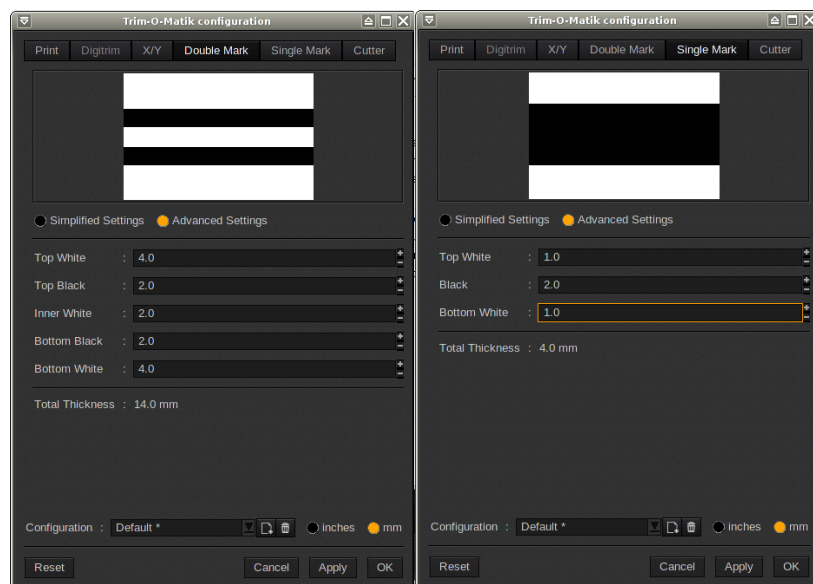


On the Print tab, select X/Y and check all the following tabs as shown in the picture (Nest-O-Ba plugin has to be installed)
Make sure that all four marks are enabled.

NOTE: the value on **Number** (green circle) is depending on how many knives you have



Please check and set the Double mark and Single mark as following:



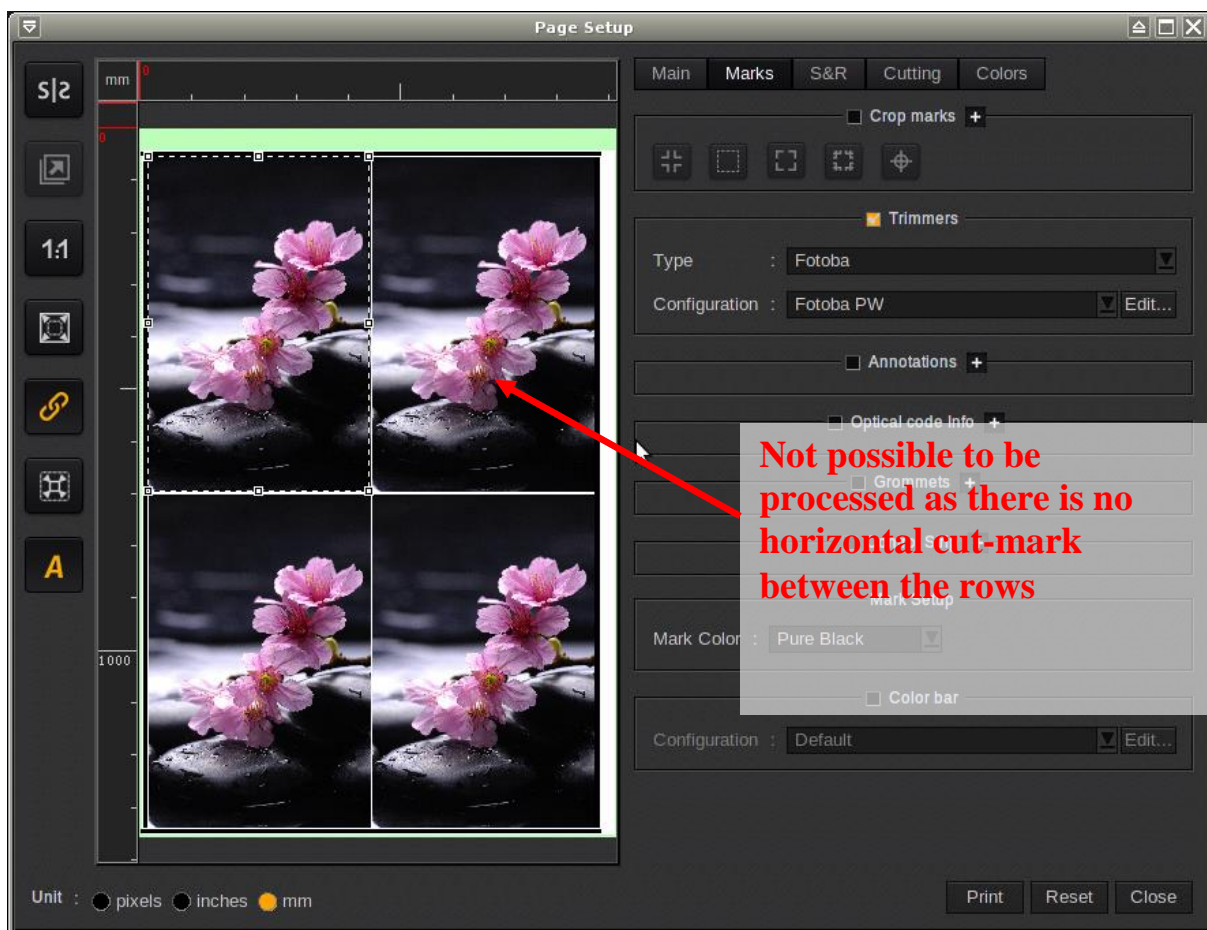
In case Nest-O-Ba plugin is not installed

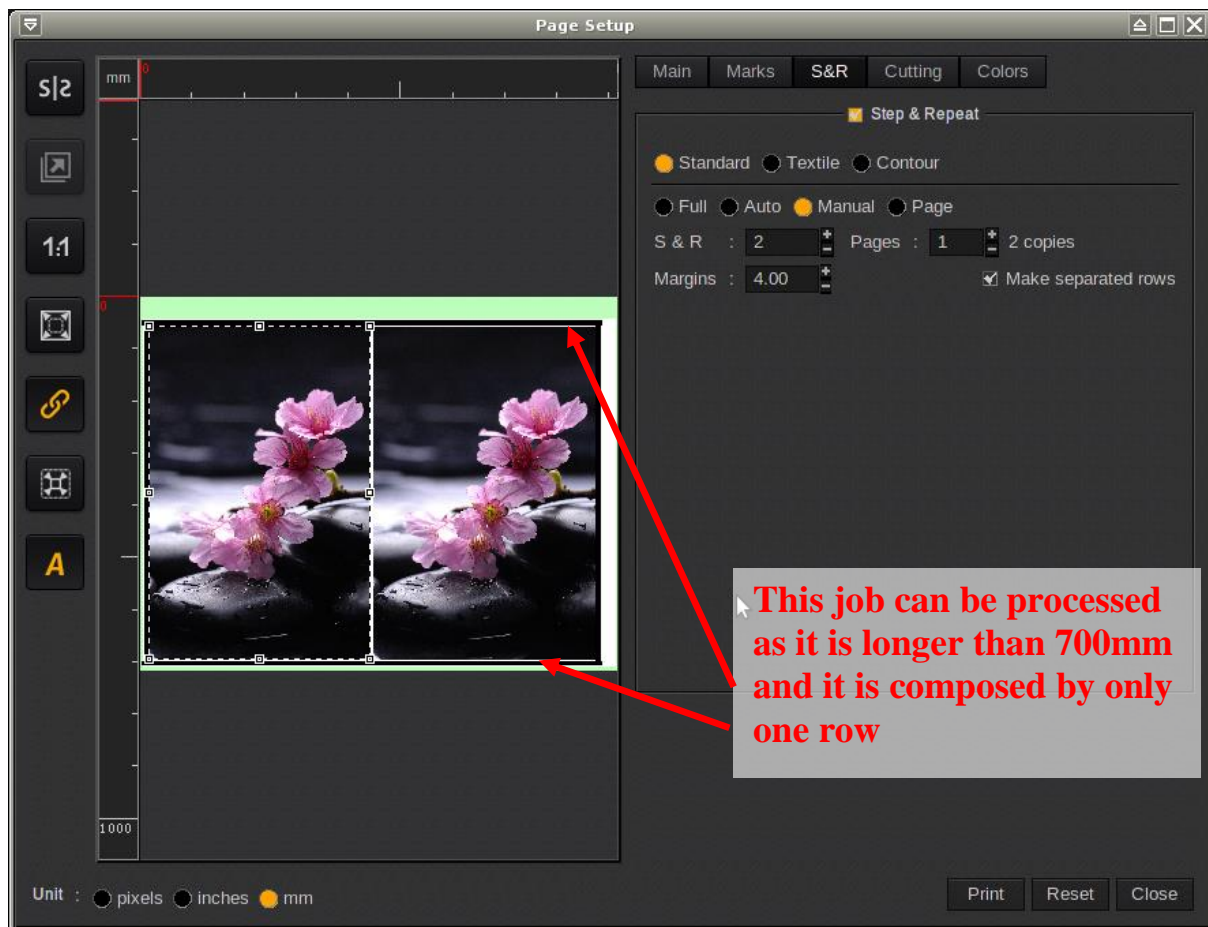
The Nest-O-Ba plugin enables the possibility to use Y/X layout.

In case Nest-O-Ba is not installed, the only option that it is possible to use is **Standard**.

The **Standard** layout will print the cut-marks only around the frame, so it will only be possible to send one row of pictures on each sheet.

NOTE: The minimum suggested length of sheet that can be processed by the cutter is 700mm

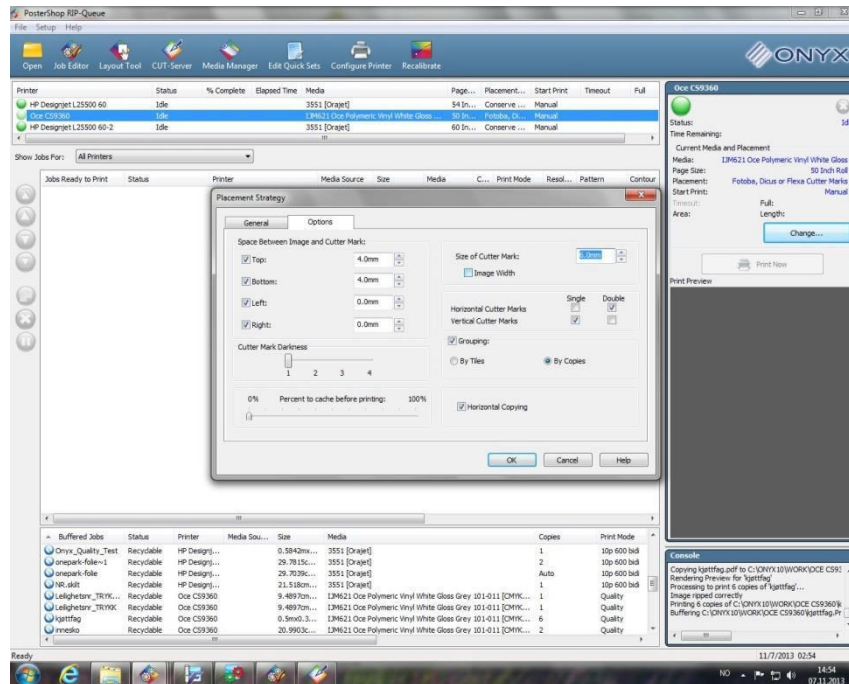




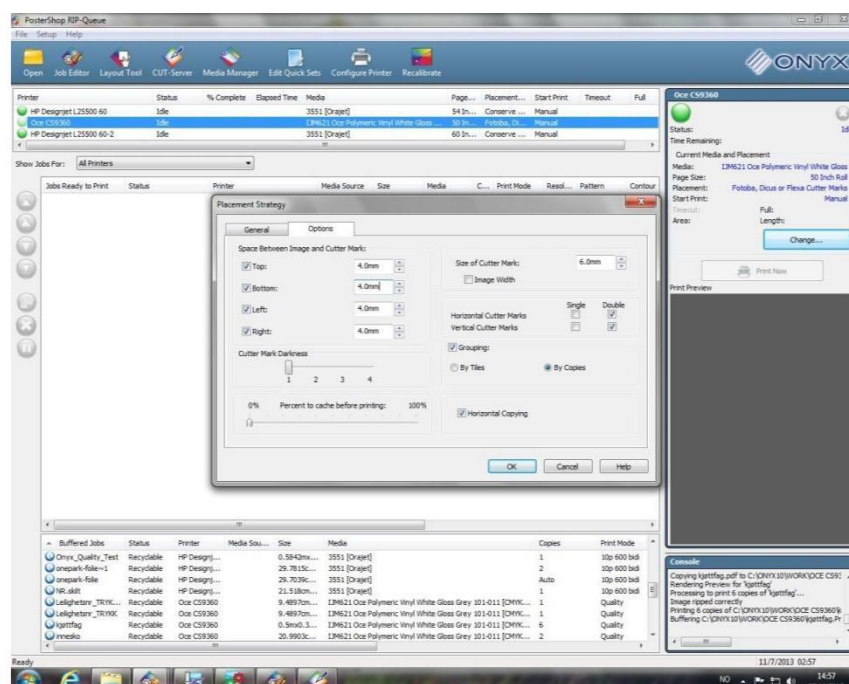
General Onyx settings

- Selecting the printer, click on **Change**.
- On the placement menu select **Fotoba, Dicuss or Flexa Cutter Marks**
- Following the suggested settings for the marks.

Settings for X/Y cutting

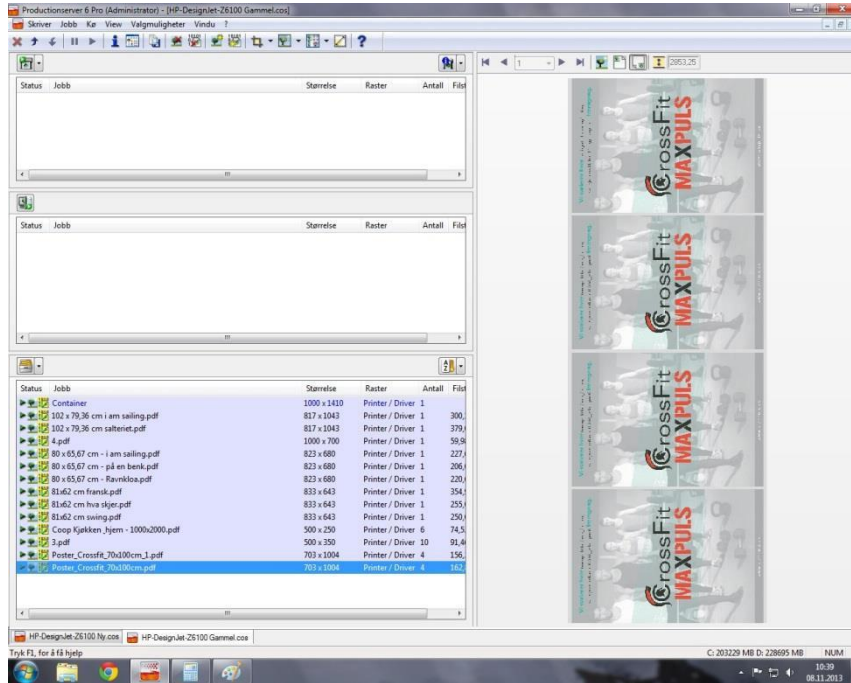


Settings for Digitrim

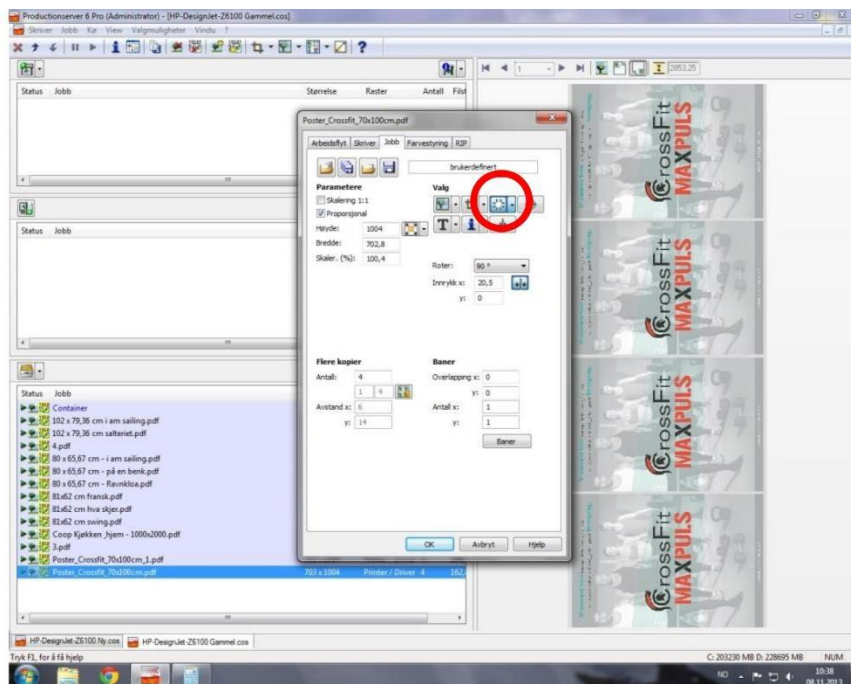


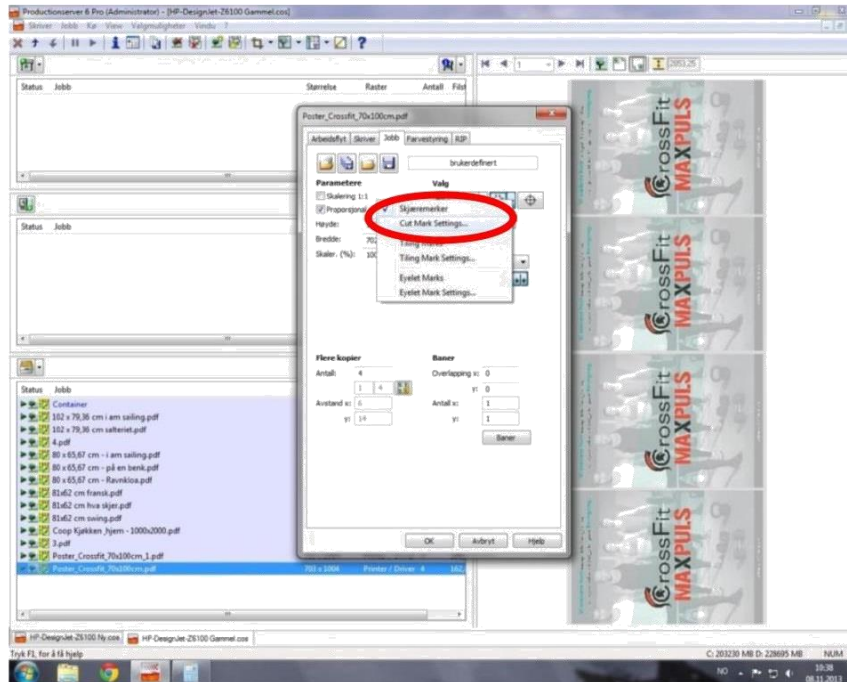
General Colorgate settings

- Select the job

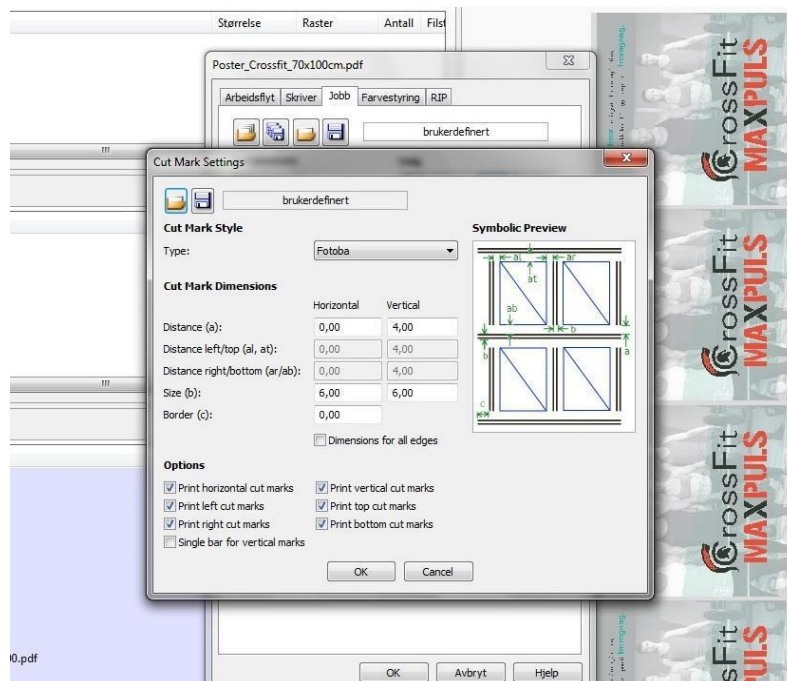


- Open the job properties and click on **cut marks setting**

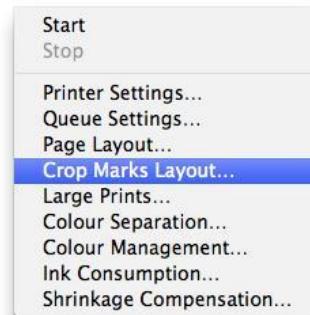




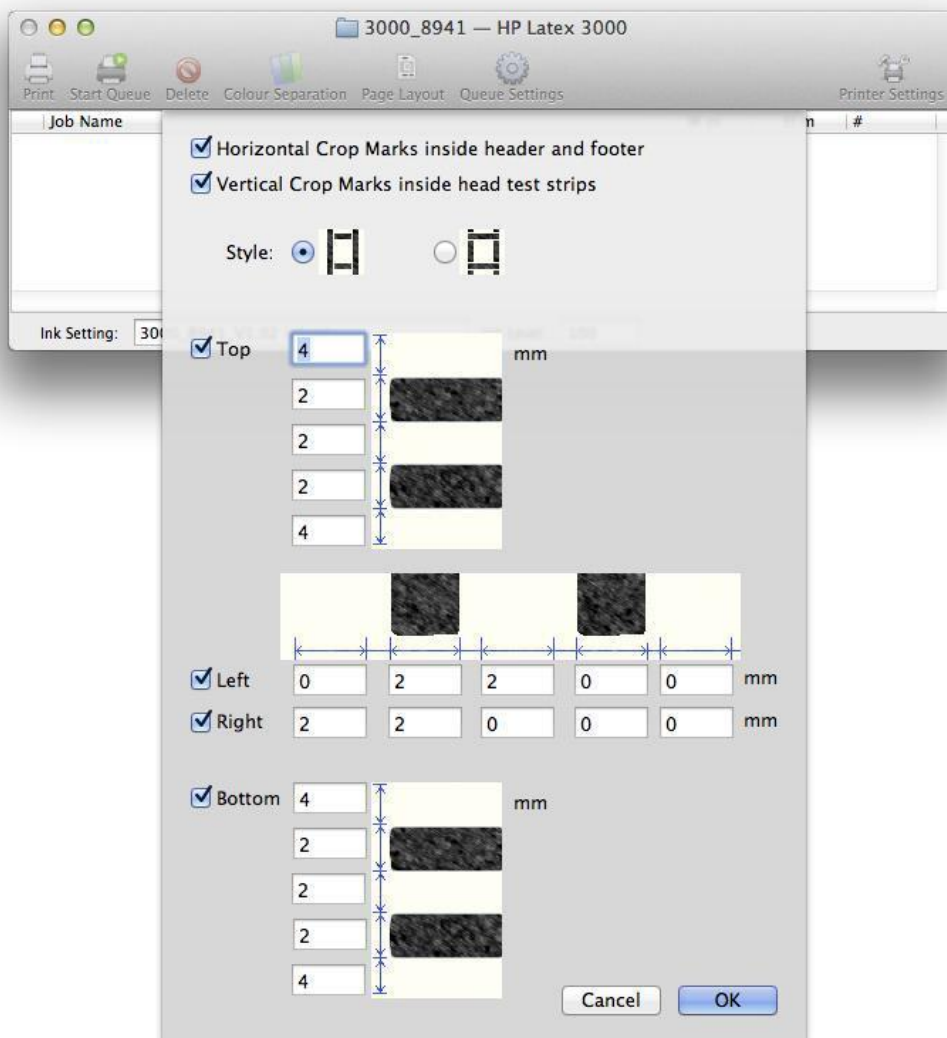
- Select the following settings



General AVA settings

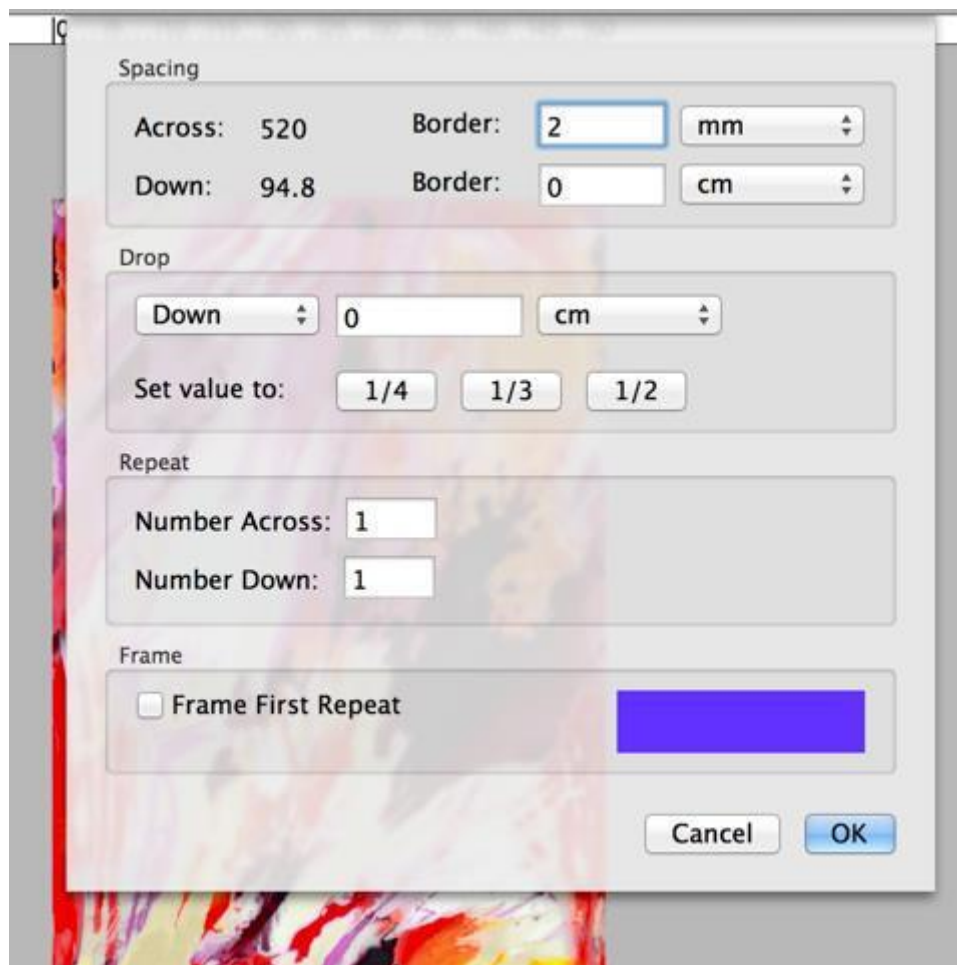


Select> Queue Menu > Crop Marks for Fotoba



Below are the steps to setup two repeats of the same design ready to print on the HP LX for the Fotopa to cut. It seems like a lot of steps, but when you have done it a couple of times it's actually quite quick.

1. Open design in AVA, set 1 to **repeat** and activate all layers, go, View > Set Repeat, put in a 2 mm border across as seen below and click OK.



2. Go, Edit > Select All.

3. Choose the **Crop tool**, press the CTRL key clicking on the design, from the contextual menu choose 'Set from Selection', then (still with the CTRL key pressed) click on the design and from the contextual menu choose 'Crop'.

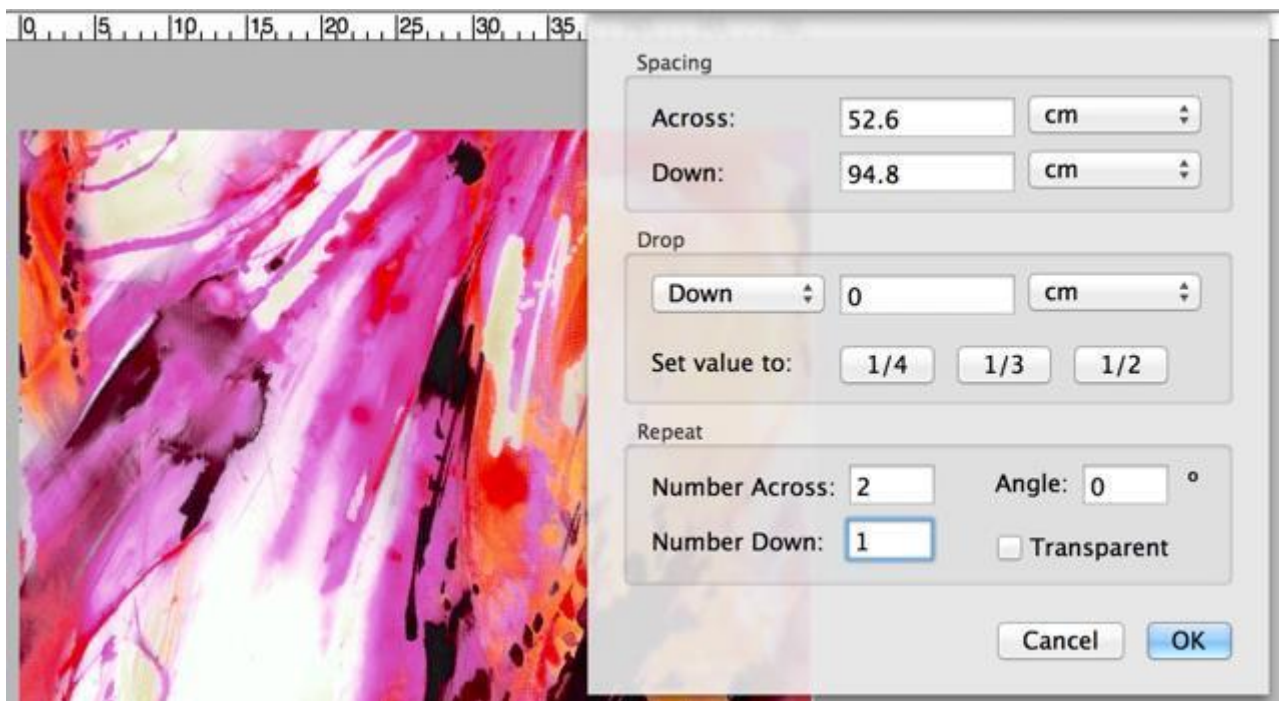
4. With the selection still on, press the CTRL key clicking on the design, from the contextual menu choose 'Set from Selection' again, then double click the Crop to bring up the Crop tool's Set dialogue, add 4 mm to the width and click OK.

5. Press the CTRL key clicking on the design, from the contextual menu choose 'Crop', this will give you the following, 2 mm border each side of the repeat and a 2 mm space on the right.



6. Go, Edit > Select > None.

7. Go, Edit > Step and Repeat, as below set 2 across and 1 down and click OK.



8. Go, Edit > Select All, then Edit > Select Snap.

9. With the Crop tool selected, press the CTRL key clicking on the design, from the contextual menu choose 'Set from Selection', then (still with the CTRL key pressed) click on the design and from the contextual menu choose 'Crop', this is to remove the white space in the right. You should end up now with the image below, two copies of the design, each with a 2 mm border either side and a 2 mm gap in between the two repeats.



10. Go, Edit > Select > None (just to clear the selection).

NOTES

- The 'AVA Digital Print RIP' will add the required cut marks to the right and the left of the two repeats, there should be no need to have cut marks in the middle, the Fotoba only actually has one sensor.
- If you need a larger gap in the middle of the two repeat, increase this in **point 4** from 4 mm to what you require.

General Ergosoft settings

ErgoSoft AG
Moosgrabenstr. 13
CH-8595 Altnau, Switzerland

© 2010 ErgoSoft AG, All rights reserved.

The information contained in this manual is based on information available at the time of publication and is subject to change without notice. Accuracy and completeness are not warranted or guaranteed.

No part of this manual may be reproduced or transmitted in any form or by any means, including electronic medium or machine-readable form, without the expressed written permission of ErgoSoft AG.

Brand or product names are trademarks of their respective holders.

The **ErgoSoft RIP** is available in different editions. Therefore the description of available features in this document does not necessarily reflect the license details of your edition of the **ErgoSoft RIP**. For information on the features included in your edition of the **ErgoSoft RIPs** refer to the ErgoSoft homepage or contact your dealer.

Rev. 1.1

Introduction

The Fotoba cutters that are supported in the **ErgoSoft RIP** are not designed to be used for contour cutting but for cutting images from a job using just horizontal and vertical cut lines. This type of cutting needs some special preparation and configuration that are quite different from the preparation and configuration needed for contour cutting.

The **Fotoba Cut Marks** function of the **ErgoSoft RIP** supports three different types of cut mark configuration:

- Horizontal and vertical double lines around images needed e.g. for Fotoba Digitrim cutters.
- Double lines above and below the images needed e.g. for Fotoba Rollcut cutters.
- Double lines above and below the images as well as one line along the job needed e.g. for Fotoba XL... cutters.

Configuring for Fotoba Digitrim Cutters

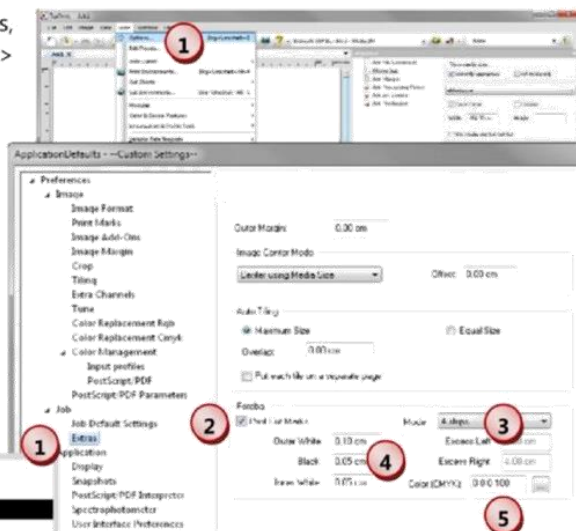
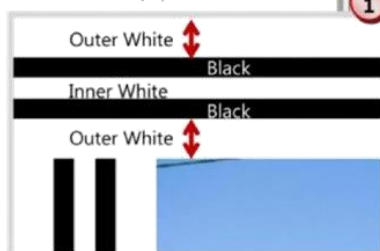
In order to activate the Fotoba cut marks in the job, the activation and configuration of the marks must be done before the images are imported into the **ErgoSoft RIP**. Please note that the setting cannot be changed for already imported images.

1 To configure Fotoba cut marks, select menu **Tools > Options > Preferences > Job > Extras**.

2 In the section **Fotoba**, check **Print Cut Marks** to activate automatic printing of Fotoba cut marks.

3 In the list **Mode**, select **4 strips**.

4 Specify the thickness of the different strip parts:



5 Specify the CMYK values for printing the black color of the "black" strips by clicking the "..." button. By default, the black is mixed using black ink only. If needed, you can add colored ink to get a darker, brighter black.

6 Import the image(s). The needed strips are automatically added to the images. Please note that the Fotoba cut marks cannot be used together with print marks; print marks are automatically deactivated when Fotoba cut marks are activated.

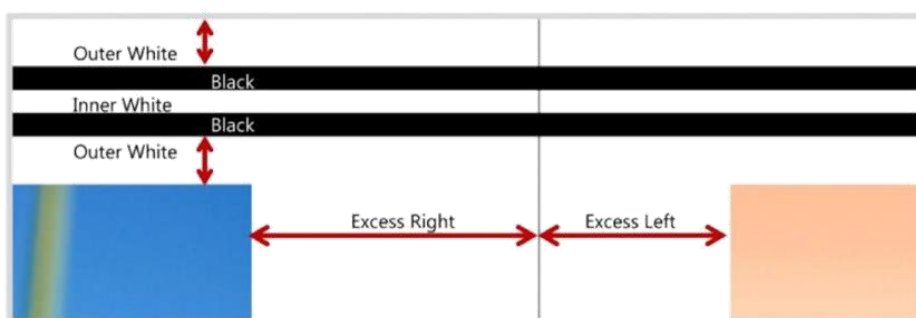
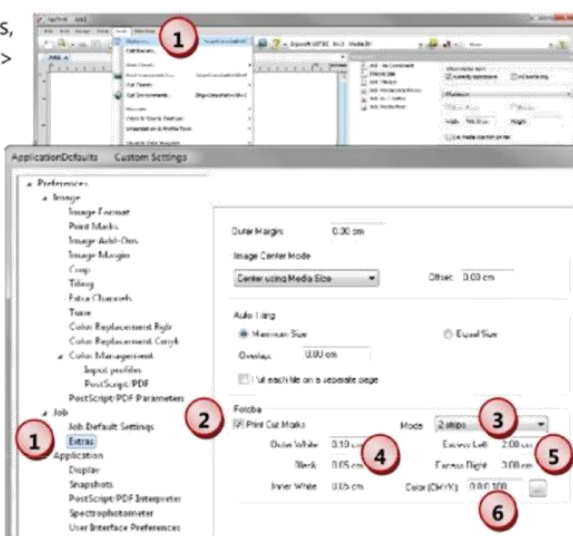


Configuring for Fotoba Rollcut Cutters

In order to activate the Fotoba cut marks, the activation and configuration of the marks must be done before the images are imported into the **ErgoSoft RIP**. Please note that the setting cannot be changed for already imported images.

Basic settings

- 1 To configure Fotoba cut marks, select menu **Tools > Options > Preferences > Job > Extras**.
- 2 In the section **Fotoba**, check **Print Cut Marks** to activate automatic printing of Fotoba cut marks.
- 3 In the list **Mode**, select **1 strip** or **2 strips** depending on your printing workflow. The different workflows are explained below.
- 4 Specify the thickness of the different strip parts:



- 5 Use values **Excess Left** and **Excess Right** according to the figure above to configure an automatic left and right margin to the image in order to consider the position of the knives cutting vertically (in the direction of media movement).
- 6 Specify the CMYK values for printing the black color of the "black" strips by clicking the "..." button. By default, the black is mixed using black ink only. If needed, you can add colored ink to get a darker, brighter black.

- 7 Import the image(s). The needed strips are automatically added to the images. Please note that the Fotoba cut marks cannot be used together with print marks; print marks are automatically deactivated when Fotoba cut marks are activated.



Printing one Copy of a Job or Copies with Gap between the Copies

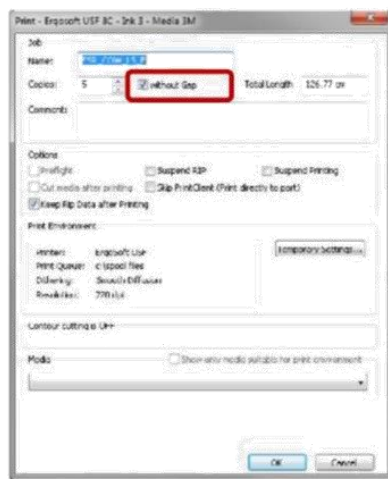
When one copy of a job or several copies of a job with a gap between the copies are printed, each job must end with a Fotoba cut mark. Thus, you have to select **2 strips** for **Mode** in the configuration of the Fotoba cut marks (see point 3 in the chapter about basic settings).

Printing several Copies of a Job without Gap

When selecting the **without Gap** function in the **Print** dialog for printing more than one copy of a job, the copies of the jobs are printed one below the other without feeding the media at the end of a job.

This printing method requires that the Fotoba cut mark at the end of the job is not printed; otherwise there will be 2 Fotoba cut marks between two jobs. Thus, you have to select **1 strip** for **Mode** in the configuration of the Fotoba cut marks (see point 3 in the chapter about basic settings).

To automatically add the missing Fotoba cut mark at the end of the printout we recommend using the **Maintenance Job** function of the **Print Client** as described in the next chapters. Please note that this method requires that there is no media feed at the end of the job.

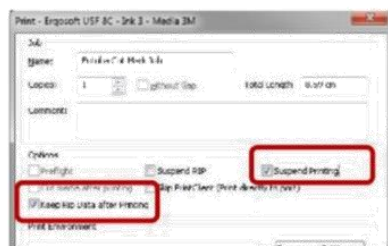


Please note that the availability of the **without Gap** function may depend on your licensed package of the **ErgoSoft RIP**.

Creating the Maintenance Job

The maintenance job needs to add the missing Fotoba cut mark at the end of the "copies without gap" printout. Thus, the job used for this purpose must hold the missing Fotoba cut mark over complete media width.

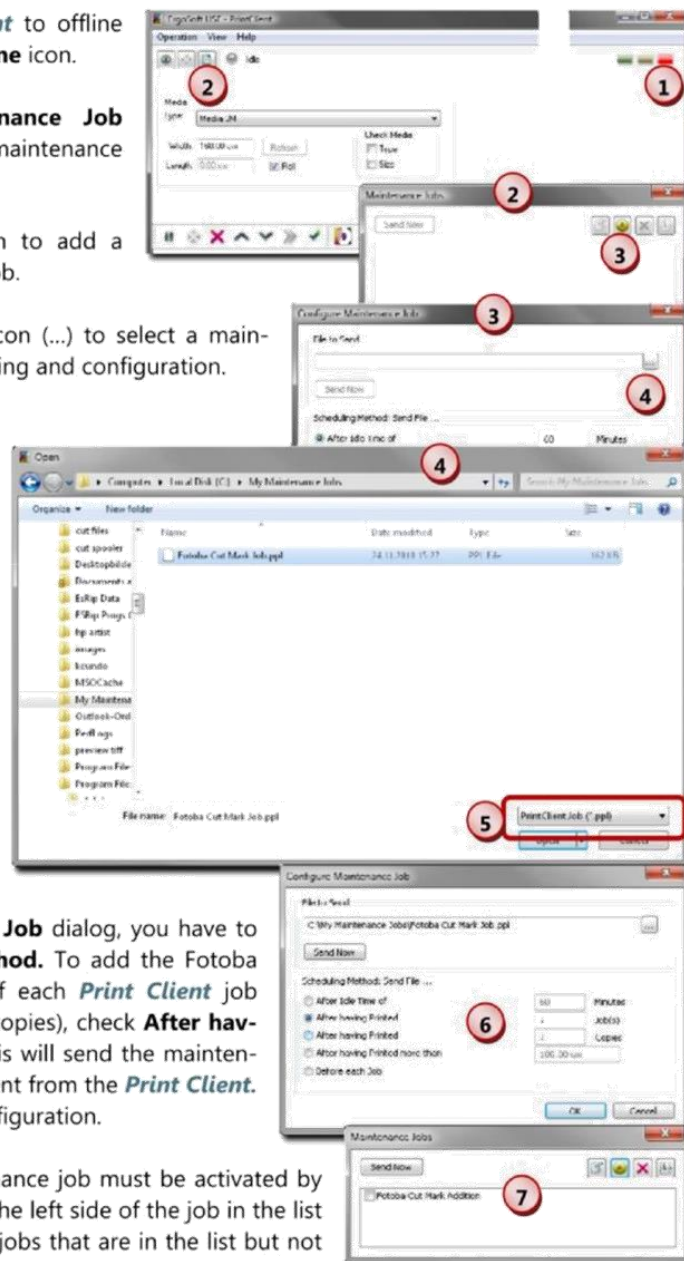
- 1 Create a new job with the same settings for the Fotoba cut mark as for the "copies without gap" job (1 strip for Mode) being selected.
- 2 Add a wide but low rectangle of any color (e.g. white). This rectangle can be created in any image processing software and scaled (without keeping the proportions) to the needed size. Or you can use the **Add Job Element** function and select **Gradient Rectangle** to create this rectangle directly in the job.
- 3 Print this job to the **Print Client** with options **Keep RIP Data after Printing** and **Suspend Printing** being checked in the **Print** dialog.
- 4 Before manually starting the print process, copy the spool file of this job (*.ppl) from the spool folder of the used **Print Client** to another folder so that it will not be removed when the job is sent to the printer.



Using the Maintenance Job

The usage of the Maintenance Job must be set up in the **Print Client** in which it should be used.

- 1 Set the **Print Client** to offline by clicking the **offline** icon.
- 2 Click the **Maintenance Job** icon to launch the maintenance jobs configuration dialog.
- 3 Click the **Add** icon to add a new maintenance job.
- 4 Click the **Browse** icon (...) to select a maintenance job for adding and configuration.
- 5 To use a job that has been printed to the **Print Client** as maintenance job, select file type **Print Client Job (*.ppl)** from the list, open the folder in which you saved the job and select the job. Click **Open** to load the job into the dialog for maintenance job configuration.
- 6 When the job is loaded into the **Configure Maintenance Job** dialog, you have to set the **Scheduling Method**. To add the Fotoba cut marks at the end of each **Print Client** job (which can have several copies), check **After having Printed 1 Job(s)**. This will send the maintenance job after each job sent from the **Print Client**. Click **OK** to finish the configuration.
- 7 At last, the maintenance job must be activated by clicking the box at the left side of the job in the list to check it. Maintenance jobs that are in the list but not checked, are not activated and will not be automatically sent to the printer.



Close the maintenance jobs list by clicking the "x" in the upper right corner of the dialog frame.

Hint: When you do not want to automatically print Fotoba cut marks after each job you may add the maintenance job to the list but do not activate it. Just, when needed, open the maintenance jobs list, select the job and click the **Send Now** button.

Please note that this method requires that there is no media feed at the end of the job.

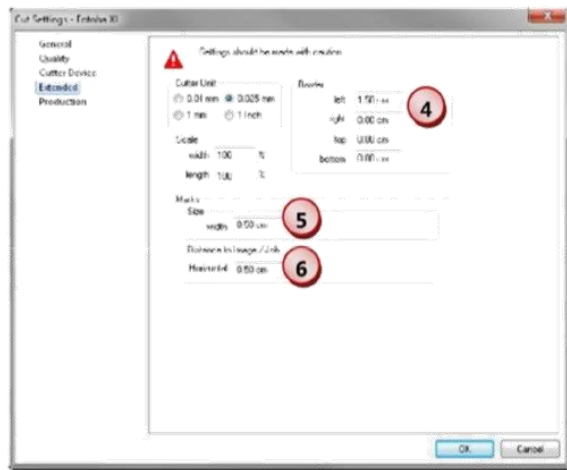
Configuring for Fotoba XL... Cutters

Basically, Fotoba XL... cutters work as already described for Fotoba Rollcut cutters. All configurations and workflows that are described above for configuring Fotoba Rollcut cutters are also valid for Fotoba XL... cutters and must be done.

In addition to Fotoba Rollcut cutters, Fotoba XL... cutters need a certain line being printed along the job. This can be done automatically by activating contour cutting using a certain driver.

Configuring the Cut Environment

- 1 Activate the **Cut Environments** toolbar by selecting command *View > Tools > Cut Environments*.
- 2 Add a cut environment based on drivers "*Fotoba XL" (available in newer versions of the **ErgoSoft RIP**) or "*Fabricut".
- 3 Since the cut environment is only needed to automatically create the cut line along the job side and not for contour cutting, you do not need to configure it for output. Just the configuration for the cut line must be done on the **Extended** tab.
- 4 Set the border needed around the job. Please note, that normally, you do not need to modify the default settings.
- 5 Set the **width** of the cut line that is printed along the left side of the job.
- 6 Set the distance between the job and the cut line.



Sample Printout

A printout for Fotopa XL... cutters should look like the following sample:



General Fiery settings

FOTOPA CROP MARKS

If you have a license for the Cut Marks Option, you can print FOTOPA crop marks. FOTOPA crop marks are designed to enable precise positioning of the cutting blade on each device. The Cut Marks Option provides full support for Digitrim devices, as well as for XL and WR roll cutters.



TO SET UP FOTOPA CROP MARKS

1 Do one of the following:

- Go to System Manager. In the layout area, click the workflow. On the Finishing tab, open the Crop Marks pane.
- Go to Job Explorer. In the job list, click the job. On the Finishing tab, open the Crop Marks pane.

2 On the pane bar, select the check box to activate the settings.

3 Select "Page Marks", "Sheet Marks", or "Tile Marks".

4 Multiple selections are possible. Sheets marks are available for nestings only.

5 Select a type of FOTOPA crop marks.

Choose between "FOTOPA DIGITRIM", "FOTOPA XL" and "FOTOPA WR".

6 For FOTOPA XL or FOTOPA WR: Select "Cut fixed media slug (8 mm)" (optional).

This setting applies a cut slug of 8 mm. The cut slug defines the distance between two cutting blades on devices with more than one blade. The cut slug is applied on top of the bleed setting.

In nestings and step and repeats, this setting can be applied only to pages.

7 Define the appearance of the FOTوبا crop marks.

The available settings vary, depending on the type of FOTوبا crop marks you have selected.

For FOTوبا DIGITRIM, you can define a line thickness for horizontal crop marks.

For FOTوبا XL and FOTوبا WR, you can make independent settings for horizontal and vertical line thickness. By default, the vertical line thickness for FOTوبا WR is set to "0", so that only horizontal crop marks (top and bottom) are visible. To add vertical crop marks, type a value in the appropriate box.

8 Define a color (optional).

The default color is black. By clicking the black box, you can select a different color.

9 Define a bleed setting (optional).

The bleed setting repositions the crop marks in relation to the image. By adding a frame around the image you can add white space between image and crop marks.

**10 Save your changes.**

If you work regularly with different FOTوبا marks, it is a good idea to save each group of settings as a preset. A preset is a template for a group of settings that are saved under a unique name. You can create presets in the pane bar menu. The next time you set up FOTوبا marks, you need only to select the preset name.